



Mount Wachusett
Community College

QUALITY SYSTEMS INTENSIVE WORKSHOP

40 hour (2 week, 5hr/day, 4-day)

Prepared by Gretchen Ingvason as part of NSF ATE Grant #1304474 -
(National Science Foundation Advanced Technical Education)



Start near. Go far.



mwcc.edu

QUALITY SYSTEMS INTENSIVE WORKSHOP

This material is based upon work supported
by the National Science Foundation under
Grant No. 1304474



Any opinions, findings, and conclusions or recommendations expressed in this material are those of the author(s) and do not necessarily reflect the views of the National Science Foundation.

MODULE 2

MEASUREMENT AND SAMPLING



Developed as part of NSF ATE Grant #1304474 - Dec 2014

3

WHAT HAVE WE COVERED

- **Quality Management System**
 - Say what you do
 - Do what you Say
 - Write it all Down
- **Quality Department**
 - *Quality Assurance*
 - plans, develops, and documents processes that optimize objectives
 - Reviews and Evaluates
 - Systems based (oversight)
 - **Documentation**
 - **Regulations**

Developed as part of NSF ATE Grant #1304474 - Dec 2014

4

NEXT PHASE

- **Quality Management System**
 - Say what you do
 - Do what you Say
 - Write it all Down
 - Analyze the Results
 - Act on the Difference
- **Quality Department**
 - **Quality Assurance**
 - plans, develops, and documents processes that optimize objectives
 - Reviews and Evaluates
 - Systems based (oversight)
 - **Quality Control**
 - evaluates products (services) and responds to non-conformities
 - Inspection & Release
 - Manufacturing Floor

Developed as part of NSF ATE Grant #1304474 - Dec 2014

5

QUALITY CONTROL

Quality is a product (or service) with the features and characteristics which determine desirability and can be controlled to meet certain basic requirements.

Developed as part of NSF ATE Grant #1304474 - Dec 2014

6

QUALITY CONTROL

Quality is a product (or service) with the features and characteristics which determine desirability and can be controlled to meet certain basic requirements.

- Inspection evaluates product quality by comparing measurement results with specifications.
 - Measurement of sample
 - Comparison against specification
 - Decision based on results
 - Corrective action, if necessary

Developed as part of NSF ATE Grant #1304474 - Dec 2014

7

QUALITY CONTROL

Quality is a product (or service) with the features and characteristics which determine desirability and can be controlled to meet certain basic requirements.

- Inspection evaluates product quality by comparing measurement results with specifications.
 - Measurement of sample
 - Comparison against specification
 - Decision based on results
 - Corrective action, if necessary
- Metrology (measurement fundamentals & calibration)
- Inspection Processes (specifications, drawings, tools)
- Sampling

Developed as part of NSF ATE Grant #1304474 - Dec 2014

8

MEASUREMENTS

Specifications & Print Reading for Industry
Geometric Dimension and Tolerance
Introduction to Metrology

Developed as part of NSF ATE Grant #1304474 - Dec 2014

9

SPECIFICATIONS

- *Measurement* is a process for evaluating a property or characteristic of an object and *describing it with a numerical or nominal value*.
- *Quality* is a product (or service) with the *features and characteristics* which determine desirability and can be controlled to *meet certain basic requirements*.

Specifications = basic requirements

Developed as part of NSF ATE Grant #1304474 - Dec 2014

10

SPECIFICATIONS / DRAWINGS

- Specifications define expected performance limits
 - what are critical characteristics and their individual requirements
- To manufacture/build a product, part, assembly or structure a set of drawings need to provide the detail
 - Drawing: visual representation of product, component part, etc. which includes dimensions
 - Historically drawing was the blueprint

Developed as part of NSF ATE Grant #1304474 - Dec 2014

11

SPECIFICATION

- Specifications can be word documents and/or drawings
 - Internal or External documents
 - Used by Customer to detail requirements
 - Used by R&D to design/evaluate
 - Used by Purchasing to buy
 - Used by Production to manufacture
 - Used by Quality to measure

Developed as part of NSF ATE Grant #1304474 - Dec 2014

12

SPECIFICATON

- Specifications can be word documents and/or drawings
- Will contain
 - Description of material/component/assembly
 - Manufacturer name/address
 - Material(s) of construction
 - Features or characteristics required
 - How they are to be measured
 - Measurement requirements, with tolerances
 - Can be dimensions, functionality, etc.
 - Delivery requirements
 - Packaging materials
 - Container sizes
 - Labeling
 - Additional requirements as necessary for Customer to convey needs to Supplier

Developed as part of NSF ATE Grant #1304474 - Dec 2014

13

- Review product specification examples

Developed as part of NSF ATE Grant #1304474 - Dec 2014

14

DRAWING

- Drawing is also a specification, but provides detailed dimensional description
 - Architectural
 - Electrical
 - Facilities (plumbing, HVAC, etc)
 - Part, Component, Product, Assembly
 - Historically, “blueprint” produced on paper using pencil/ink
 - Now created by computer aided design software (CAD)
 - AutoCAD® CREO (formerly ProE), Solid Works, Inventor, etc

Developed as part of NSF ATE Grant #1304474 - Dec 2014

15

DRAWING

- Drawings contain the following
 - Drawing Number, name of part,
 - Name/address of preparer
 - Drawing Scale
 - Symbols, notes and specifications
 - Material specification, bill of materials (if applicable)

Developed as part of NSF ATE Grant #1304474 - Dec 2014

16

DRAWING

- American Society of Mechanical Engineers provides standard for industry
 - ASME Y14.5-2009 “Dimensioning & Tolerancing: Engineering Drawing and Related Documentation Practices”
 - Language and rules learned
 - Aids intra- & inter-company communication

Referred to as GD&T (geometric dimension & tolerance)

Developed as part of NSF ATE Grant #1304474 - Dec 2014

17

UNDERSTANDING THE DRAWING

- Drawings depict
 - sizes, shapes, and locations of different features
 - along with tolerances (acceptable variation)
- Tolerance(s) – acceptable variation
 - Unilateral Tolerance
 - 0.200 inches + 0.005/-0.000 inches
 - Bilateral Tolerance
 - 0.200 inches +/- 0.005 inches
 - 0.200 inches +0.010 / -0.005 inches
 - Limit Dimensioning
 - 0.200 inches **minimum**
 - 0.200 inches **maximum**

Developed as part of NSF ATE Grant #1304474 - Dec 2014

18

UNDERSTANDING THE DRAWING

- Drawings depict
 - sizes, shapes, and locations of different features
 - along with tolerances (acceptable variation)
- Tolerance(s) – acceptable variation
 - Unilateral Tolerance
 - 0.200 inches + 0.005/-0.000 inches
 - Bilateral Tolerance
 - 0.200 inches +/- 0.005 inches
 - 0.200 inches +0.010 / -0.005 inches
 - Limit Dimensioning
 - 0.200 inches minimum
 - 0.200 inches maximum

Note: Unilateral and limiting are different

Developed as part of NSF ATE Grant #1304474 - Dec 2014

19

UNDERSTANDING THE DRAWING

Depict part (component) with dimensions and specific symbols as needed for fit/form/function

- Lines
 - Solid vs. dotted
 - Thick vs thin
- Shapes
 - Circles, arcs
 - Squares, angles
- Symbols
 - Parallel, flatness, concentricity

Developed as part of NSF ATE Grant #1304474 - Dec 2014

20

Geometric Dimension & Tolerance

- ASME Y14.5-2009 provides specific rules for interpretation and application of symbols on drawings
 - Language and rules learned
 - Aids intra- & inter-company communication
- Use symbols instead of notes for geometric controls
 - Fit/form/function
 - Relationship between specific part features

Developed as part of NSF ATE Grant #1304474 - Dec 2014

21

GD&T SYMBOLS

GD & T Symbol	Control Type	Name
	Form	Straightness
	Form	Flatness
	Form	Circularity
	Form	Cylindricity
	Profile	Profile of Surface
	Profile	Profile of Line
	Orientation	Perpendicularity
	Orientation	Angularity
	Orientation	Parallelism
	Location	Position
	Location	Concentricity
	Location	Symmetry

ASME Y14.5-2009
"Dimensioning & Tolerancing:
Engineering Drawing and Related
Documentation Practices"

Developed as part of NSF ATE Grant #1304474 - Dec 2014

22

UNDERSTANDING THE DRAWINGS

[illegible]

Developed as part of NSF ATE Grant #1304474

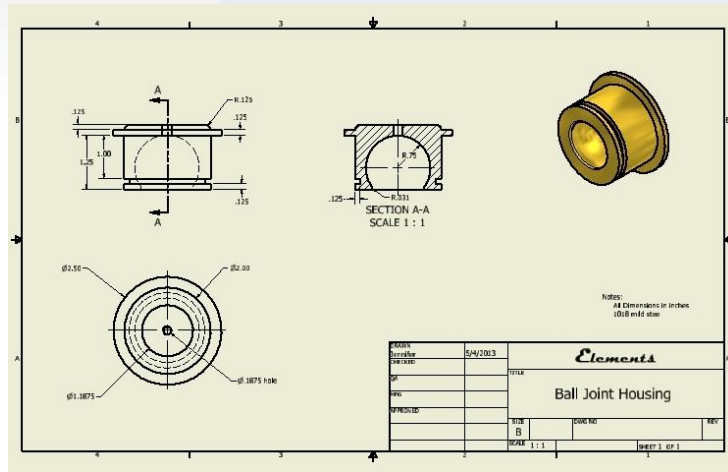
23

UNDERSTANDING THE DRAWINGS

Developed as part of NSF ATE Grant #1304474

24

UNDERSTANDING THE DRAWINGS

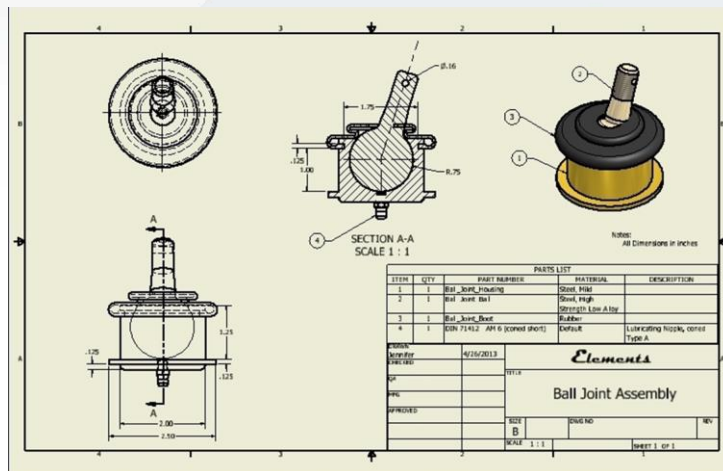


COMPONENT

Developed as part of NSF ATE Grant #1304474

25

UNDERSTANDING THE DRAWINGS

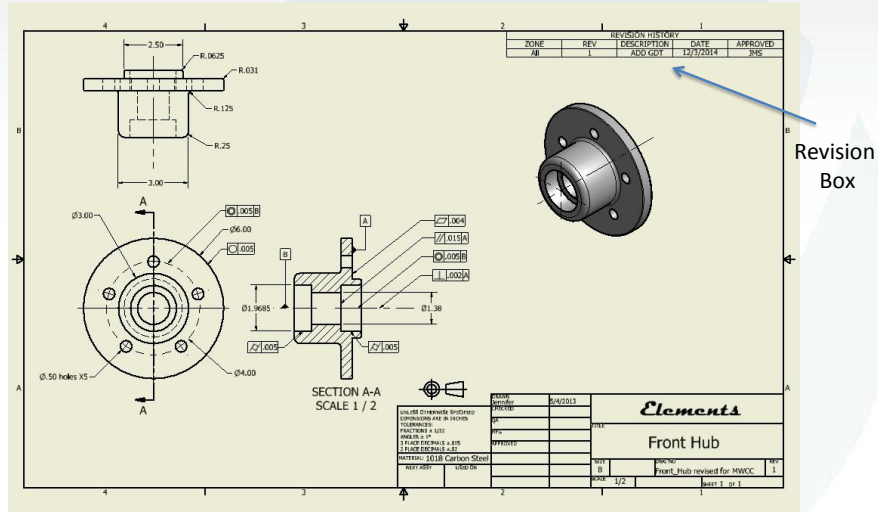


ASSEMBLY

Developed as part of NSF ATE Grant #1304474

26

UNDERSTANDING THE DRAWINGS

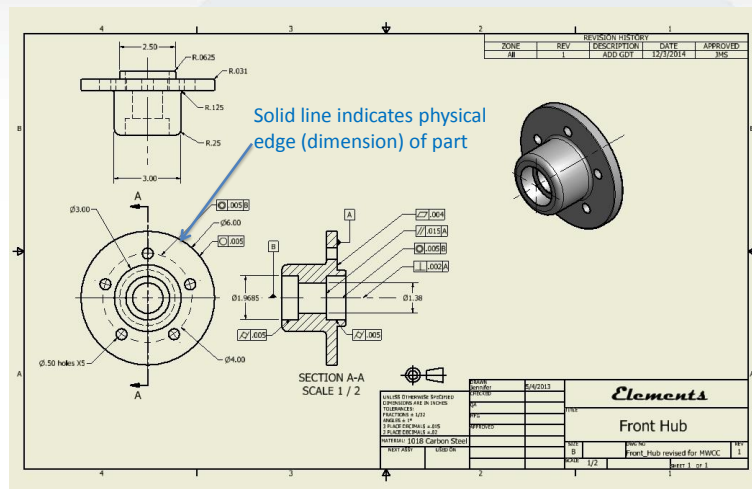


Wheel Hub for Go-Kart

Developed as part of NSF ATE Grant #1304474

27

UNDERSTANDING THE DRAWINGS

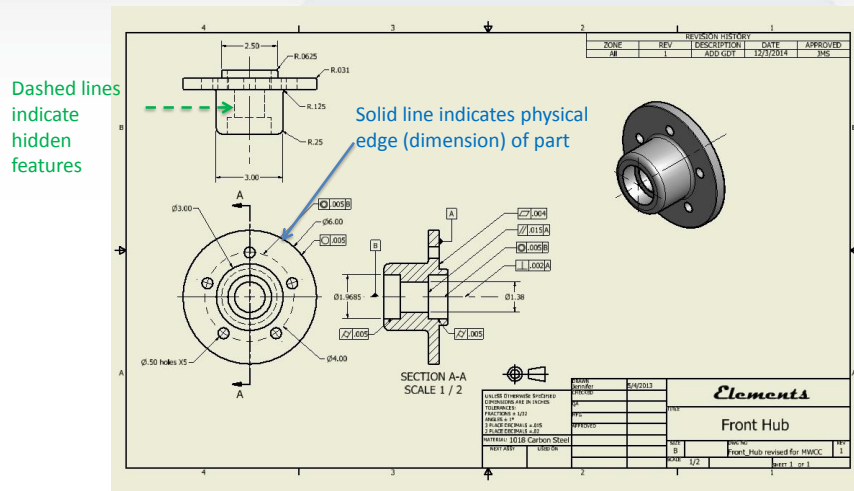


Wheel Hub for Go-Kart

Developed as part of NSF ATE Grant #1304474

28

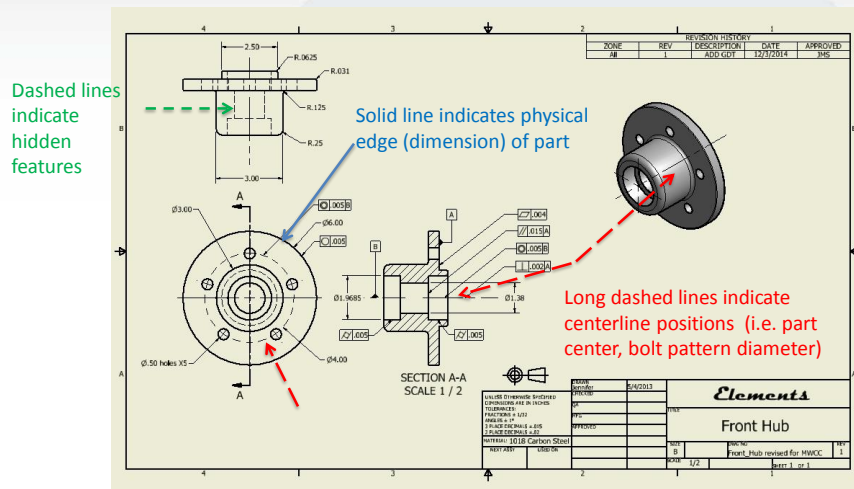
UNDERSTANDING THE DRAWINGS



Wheel Hub for Go-Kart

29

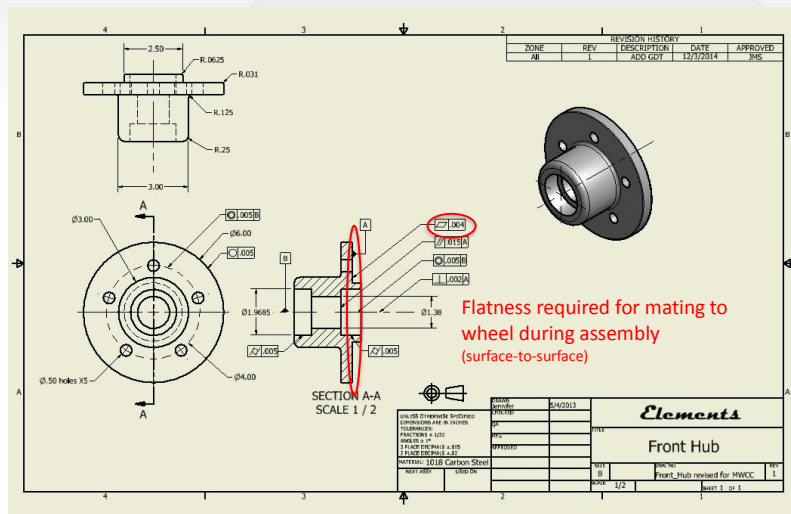
UNDERSTANDING THE DRAWINGS



Wheel Hub for Go-Kart

30

UNDERSTANDING THE DRAWINGS

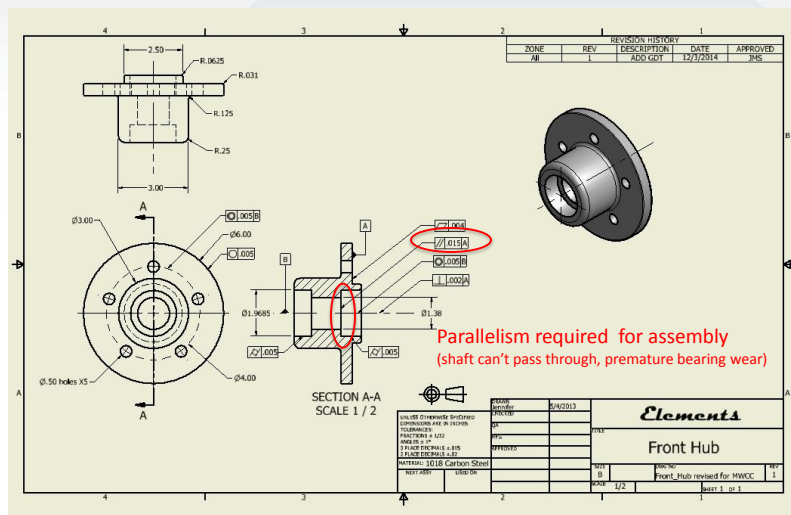


Wheel Hub for Go-Kart

Developed as part of NSF ATE Grant #1304474

31

UNDERSTANDING THE DRAWINGS

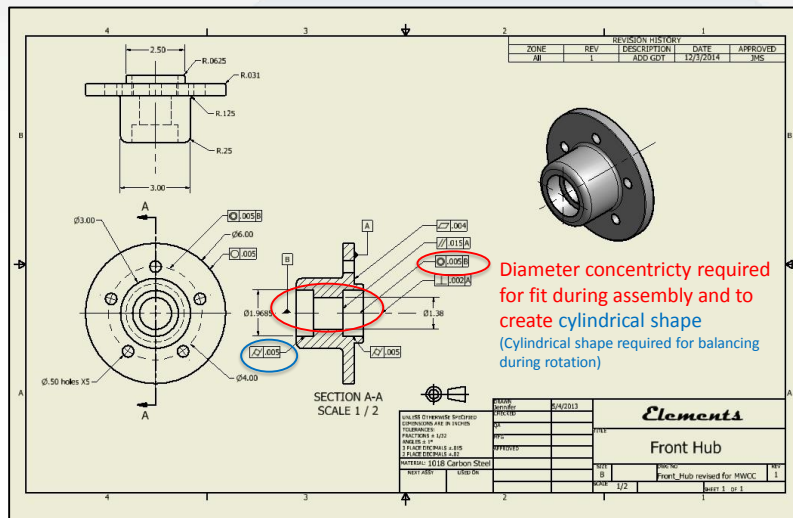


Wheel Hub for Go-Kart

Developed as part of NSF ATE Grant #1304474

32

UNDERSTANDING THE DRAWINGS



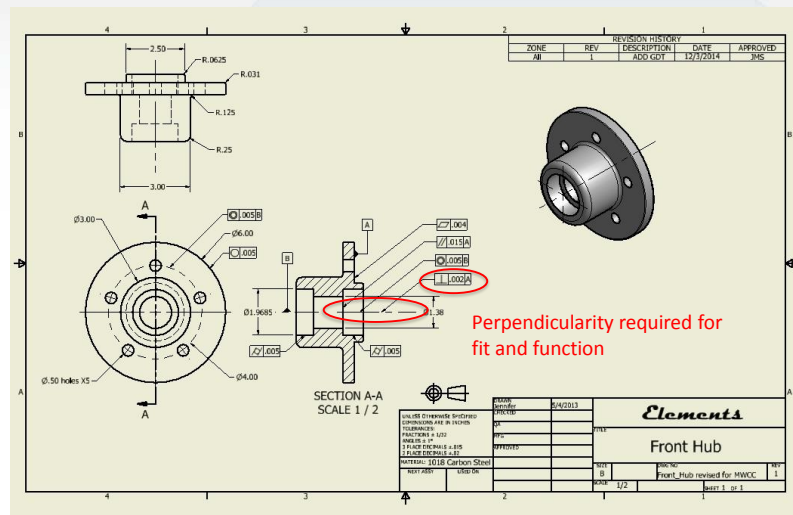
Diameter concentricity required for fit during assembly and to create cylindrical shape (Cylindrical shape required for balancing during rotation)

Wheel Hub for Go-Kart

Developed as part of NSF ATE Grant #1304474

33

UNDERSTANDING THE DRAWINGS



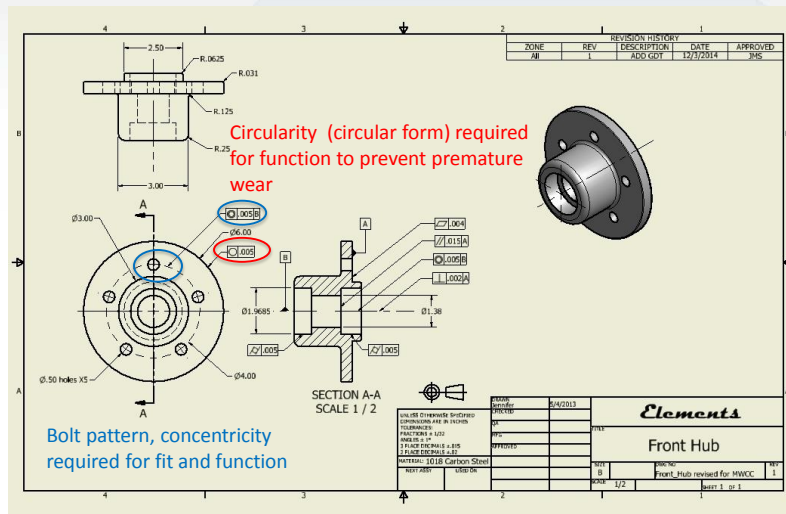
Perpendicularity required for fit and function

Wheel Hub for Go-Kart

Developed as part of NSF ATE Grant #1304474

34

UNDERSTANDING THE DRAWINGS



Wheel Hub for Go-Kart

Developed as part of NSF ATE Grant #1304474

35

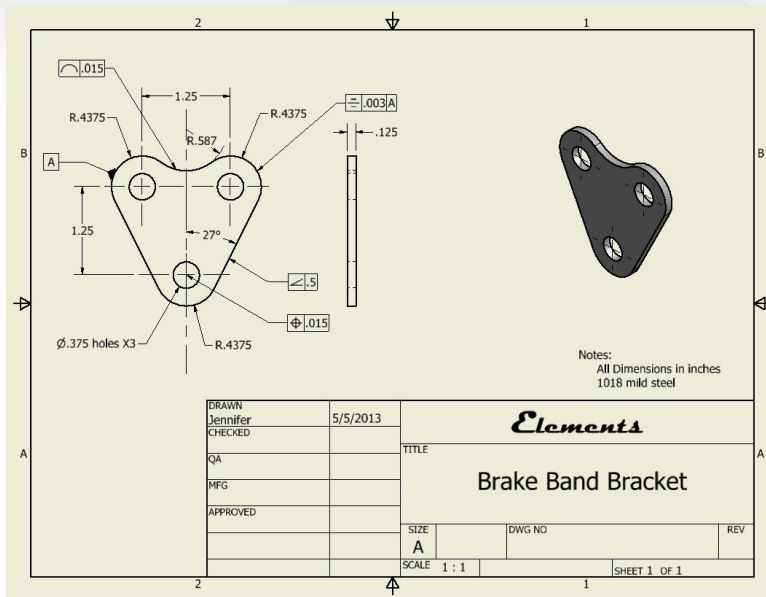
DRAWING REVIEW

Drawing review – symbols, dimensions

Developed as part of NSF ATE Grant #1304474

36

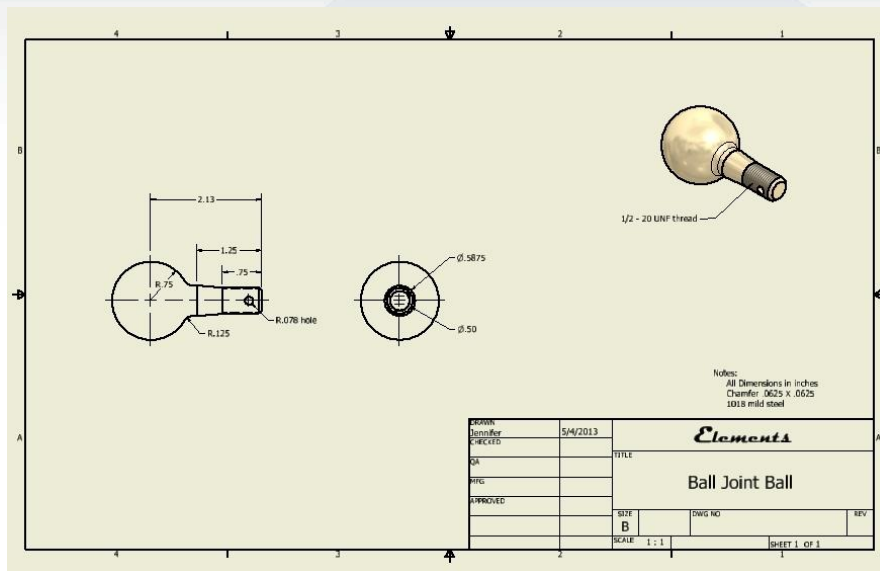
DRAWING REVIEW



Developed as part of NSF ATE Grant #1304474

37

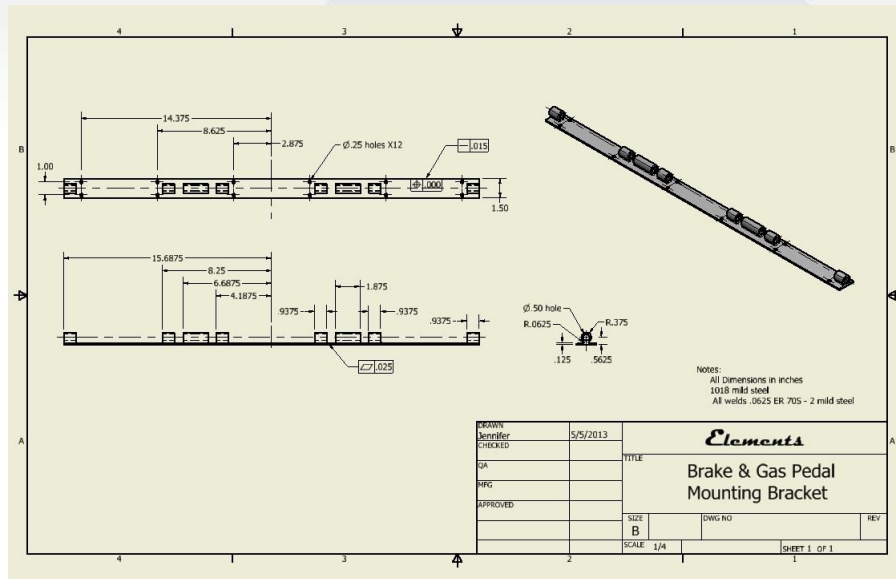
DRAWING REVIEW



Developed as part of NSF ATE Grant #1304474

38

DRAWING REVIEW



Developed as part of NSF ATE Grant #1304474

39

MEASUREMENTS

Specifications & Print Reading for Industry
Geometric Dimension and Tolerance
Introduction to Metrology

Developed as part of NSF ATE Grant #1304474 - Dec 2014

40

MEASUREMENT

- Measurement is a method for evaluating a property or characteristic of an object and describing it with a numerical or nominal value.
 - Dimensional (e.g. length, diameter, volume)
 - Functional (e.g. flow rate, tensile strength)
 - Chemical (e.g. material type, pH, etc.)
 - Service (e.g. time between calls, maintenance response, etc.)
 - Attribute (e.g. color, clarity, etc.)
 - etc.
- Measurements evaluate the fit/form/function of a product or service.

Developed as part of NSF ATE Grant #1304474 - Dec 2014

41

MEASUREMENT SYSTEM

- Two measurement systems commonly used are:
 - Metric system
 - English system
- www.onlineconversion.com
- Measurements are taken and recorded as required by the specification
 - If specification uses metric system, measure using metric tools

Developed as part of NSF ATE Grant #1304474 - Dec 2014

42

METROLOGY

- Metrology – the science of measurement
 - Precision / Accuracy of measurements
- Broad field with three basic activities
 1. Definition of internationally accepted units of measurement
 - Seven (7) base units (dimensionally independent)

Quantity	Name	Symbol
Amount of a substance	mole	mol
Electric current	ampere	A
Length	meter	m
Luminous intensity	candela	cd
Mass	kilogram	kg
Temperature	kelvin	K
Time	second	s

Developed as part of NSF ATE Grant #1304474 - Dec 2014

43

METROLOGY

- Metrology – the science of measurement
- A broad field with three basic activities
 1. Definition of internationally accepted units of measurement
 2. Realization of these units of measurement in practice (i.e. Calipers, scales, thermometers, etc.)
 3. Application of chains of traceability linking measurements made in practice to reference standards
 - Calibration Practices
 - NIST traceability (National Institute Standards & Technology)

Developed as part of NSF ATE Grant #1304474 - Dec 2014

44

METROLOGY

- Metrology – the science of measurement
 - Ensuring the suitability of measurement instruments, their calibration and quality control of measurements.
- Metrology is a broad field with three basic activities
 - Definition of internationally accepted units of measurement
 - Realization of these units of measurement in practice
 - Application of chains of traceability linking measurements made in practice to reference standards
- Three subfields that use the basic activities
 - Scientific/Fundamental - establishes units of measure

Developed as part of NSF ATE Grant #1304474 - Dec 2014

45

METROLOGY

Scientific (units of measure)

Quantity	Name	Symbol
Amount of a substance	mole	mol
Electric current	ampere	A
Length	meter	m
Luminous intensity	candela	cd
Mass	kilogram	kg
Temperature	kelvin	K
Time	second	s

Developed as part of NSF ATE Grant #1304474 - Dec 2014

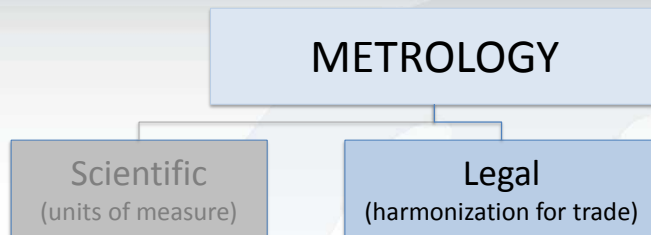
46

METROLOGY

- Metrology – the science of measurement
 - Ensuring the suitability of measurement instruments, their calibration and quality control of measurements.
- Metrology is a broad field with three basic activities
 - Definition of internationally accepted units of measurement
 - Realization of these units of measurement in practice
 - Application of chains of traceability linking measurements made in practice to reference standards
- Three subfields that use the basic activities
 - Scientific/Fundamental - establishes units of measure
 - Legal – establishes statutory requirements
 - Ensures certification of measuring devices in one country is compatible with certification in another, facilitating trade in devices and products (i.e. taxi meters, alcohol content, speedometers, etc.)

Developed as part of NSF ATE Grant #1304474 - Dec 2014

47



Developed as part of NSF ATE Grant #1304474 - Dec 2014

48

METROLOGY

- Metrology – the science of measurement
 - Ensuring the suitability of measurement instruments, their calibration and quality control of measurements.
- Metrology is a broad field with three basic activities
 - Definition of internationally accepted units of measurement
 - Realization of these units of measurement in practice
 - Application of chains of traceability linking measurements made in practice to reference standards
- Three subfields that use the basic activities
 - Scientific/Fundamental - establishes units of measure
 - Legal – establishes statutory requirements
 - Ensures certification of measuring devices in one country is compatible with certification in another, facilitating trade in devices and products (i.e. taxi meters, alcohol content, speedometers, etc.)
 - Applied/Technical/Industrial

Developed as part of NSF ATE Grant #1304474 - Dec 2014

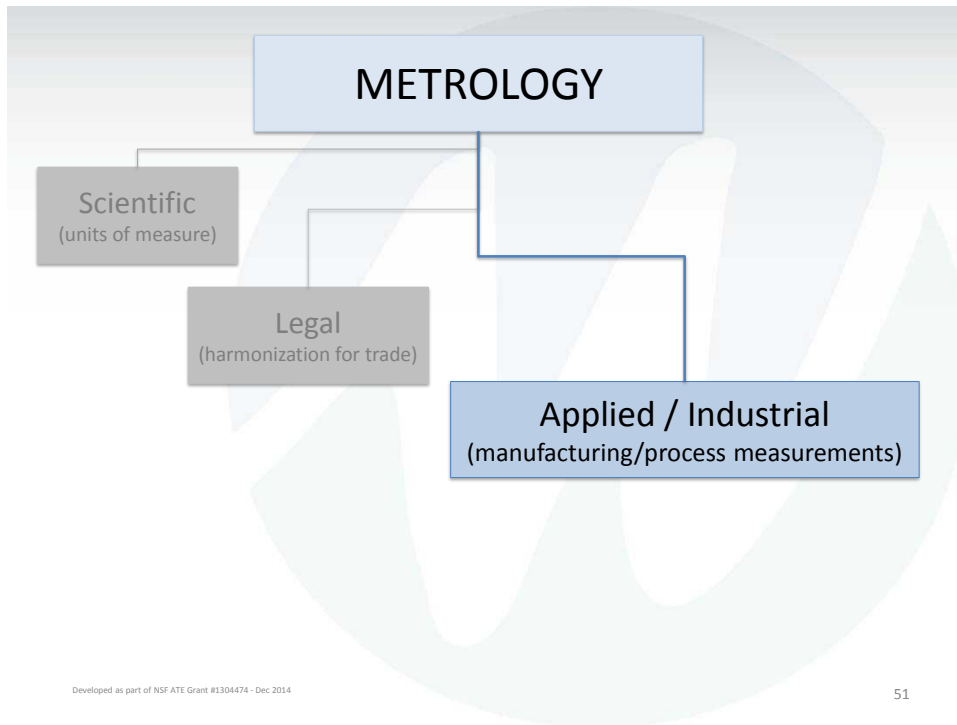
49

METROLOGY

- Applied/Industrial metrology applies measurement science to manufacturing and other processes
 - Ensuring the suitability of measurement instruments, their calibration and quality control of measurements.
 - Traceability of the calibration for the instruments necessary to ensure confidence in the measurements

Developed as part of NSF ATE Grant #1304474 - Dec 2014

50



51

METROLOGY

- ANSI/ISO/IEC 17025:2005 General Requirements for the Competence of **Testing and Calibration** Laboratories
 - implement a quality system aimed at improving ability to consistently produce valid results.
 - basis for accreditation from an accreditation body.
 - standard is about competence, accreditation is simply formal recognition of a demonstration of that competence
 - In many cases, suppliers and regulatory authorities will not accept test or calibration results from a lab that is not accredited.

Wikipedia.com

Developed as part of NSF ATE Grant #1304474 - Dec 2014

52

METROLOGY

- ISO 10012:2003(E) Measurement Management Systems – **Requirements** for Measurement **Processes** and Measuring **Equipment**
 - “... provides guidance for the management of measurement process and metrological confirmation of measuring equipment used to support and demonstrate compliance with metrological requirements...”

Wikapeida.com

Developed as part of NSF ATE Grant #1304474 - Dec 2014

53

METROLOGY

- Why bother?

Developed as part of NSF ATE Grant #1304474 - Dec 2014

54

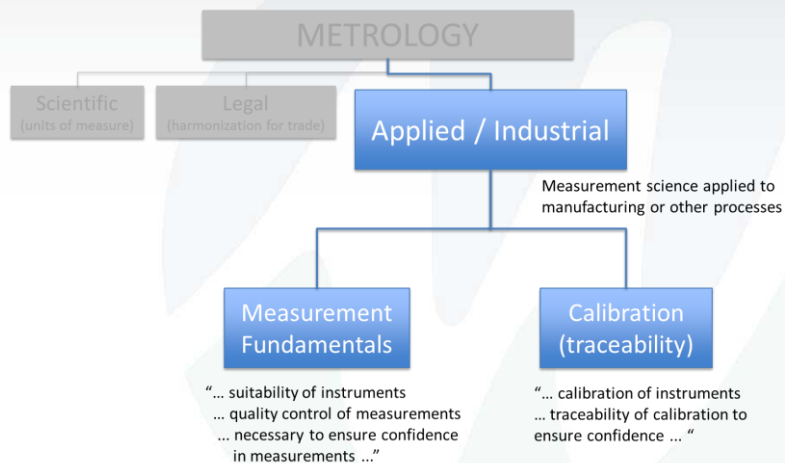
METROLOGY - References

- ISO9001:2015
 - Section 7.1.5 Monitoring & Measurement Resources
- ISO 134875:20165
 - Section 7.6 Control of monitoring & measurement equipment
- Pharmaceutical cGMPs (21CFR 211)
 - Subpart D – Equipment
 - 21CFR 211.68 Automatic, Mechanical and Electronic Equipment
 - Subpart I – Laboratory Controls
 - 21CFR 211.160 General Requirements
- Medical Device cGMPS (21CFR 820)
 - Subpart G – Production & Process Controls
 - 21CFR 820.72 Inspection, Measuring & Test Equipment

Developed as part of NSF ATE Grant #1304474 – Mar 2016

55

METROLOGY PROGRAM



Developed as part of NSF ATE Grant #1304474 - Dec 2014

56

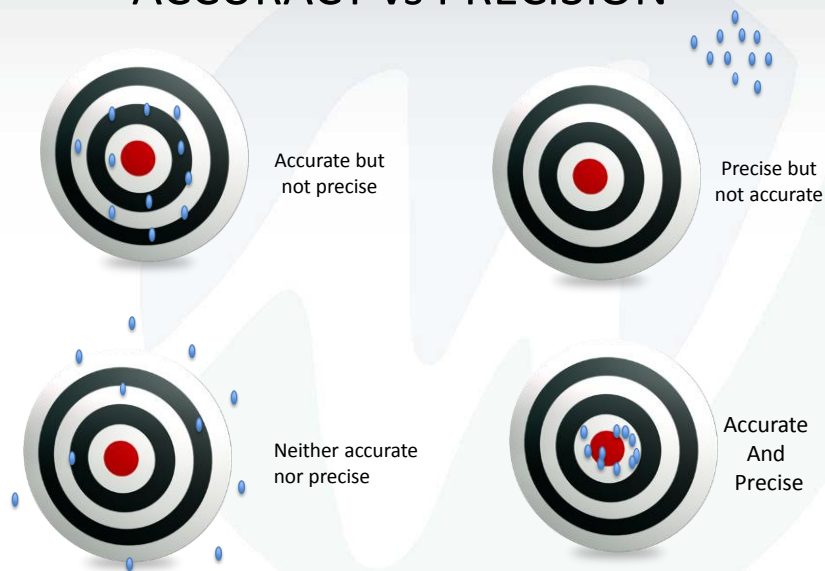
METROLOGY PROGRAM

- Measurement Fundamentals
 - Accuracy
 - How close to the “true” value is the measured value
 - Precision
 - How repeatable is the measured value

Developed as part of NSF ATE Grant #1304474 - Dec 2014

57

ACCURACY vs PRECISION



Developed as part of NSF ATE Grant #1304474 - Dec 2014

58

METROLOGY PROGRAM

- Measurement Fundamentals
 - Methods, equipment
- Calibration System
 - Verification

Developed as part of NSF ATE Grant #1304474 - Dec 2014

59

METROLOGY PROGRAM

- **Measurement Fundamentals**
 - Methods
 - System
 - Capability
 - Equipment specifications
 - Environmental Controls
 - Standards Usage
 - Confidence (Uncertainty) Programs
 - Data

Developed as part of NSF ATE Grant #1304474 - Dec 2014

60

MEASUREMENT FUNDAMENTALS

- **Methods**
 - Logical organization of operations used
 - Understanding the characteristics of what is to be measured
 - How the measurement is taken (i.e. direct, indirect, ratio, etc.)
- **System**
 - Personnel, standards, devices fixtures, etc. used to conduct the measurement
- **Capability**
 - Ability of the measurement system to accurately/precisely measure the characteristic
 - Bias: systematic offset
 - Linearity: equally increasing increments
 - Repeatability: closeness of measurements from same instrument
 - Reproducibility: closeness of measurements under same conditions
 - Stability: change in bias over time (i.e. drift)

Developed as part of NSF ATE Grant #1304474 - Dec 2014

61

MEASUREMENT FUNDAMENTALS

- Methods
- System
- Capability
- Equipment specifications
- **Equipment specifications**
 - Selection of the correct tool
 - Ability to measure within the range necessary
 - Rule of thumb 10:1 ideal (4:1 acceptable, 1:1 if necessary)
 - Unnecessary Accuracy
 - Manual versus automation
- **Environmental Controls**
 - Temperature, humidity, lighting, etc.
 - Effect on measurement tool
 - Effect on characteristic to be measured

Developed as part of NSF ATE Grant #1304474 - Dec 2014

62

MEASUREMENT FUNDAMENTALS

- Standards Usage (Traceability)
 - Per ISO/IEC 17025:2005, 5.6.2.1.1: “..For calibration laboratories, the programme for calibration of equipment shall ... ensure that calibrations and measurements ... are traceable to the International System of Units (SI) ... establishes traceability ... by means of an unbroken chain of calibrations or comparisons...”
 - Bureau International des Poids et Mesures (BIPM)
 - Ensures worldwide uniformity and traceability to SI
 - National Institute of Standards & Technology (NIST)
 - US national standards
 - aka national metrology institute (NMI); highest level of traceability within a country

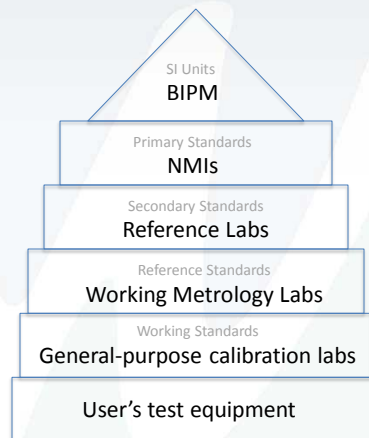
Developed as part of NSF ATE Grant #1304474 - Dec 2014

63

MEASUREMENT FUNDAMENTALS

- Standards Usage (Traceability)
 - Unbroken chain from user device to SI unit
 - Documentation (certificate)
 - Test Uncertainty Ratio (TUR)

$$\frac{\text{stated accuracy of standard}}{\text{stated accuracy of device under test}}$$
 - 10:1 desired
 - 4:1 acceptable



Developed as part of NSF ATE Grant #1304474 - Dec 2014

64

MEASUREMENT FUNDAMENTALS

- Confidence (Uncertainty) Programs
 - Accuracy / precision
 - Uncertainty: range of probable values of “true value”
 - Measurement Errors
 - Random Error: scattered results (i.e. drafts)
 - Systematic Error: bias (i.e. excessive wear)
 - **Environmental Error**: temperature, vibration, pressure, etc.
 - **Observational Error**: dial indicators (parallax & interpolation)
 - **Gross Human Error**: misuse, blunders, mistakes (i.e. reading in kg, reporting in pounds)

Developed as part of NSF ATE Grant #1304474 - Dec 2014

65

MEASUREMENT FUNDAMENTALS

Develop a measurement program

i.e. Juice boxes, prescription tablet,

or - pick something from your work history

Developed as part of NSF ATE Grant #1304474 - Dec 2014

66

MEASUREMENT FUNDAMENTALS

- Methods
- Capability
- Equipment specifications
- Standards Usage
- Environmental Controls
- Standards Usage
- Confidence (Uncertainty) Programs
- Data
 - Measurement results (data) used to make decisions
 - Type and quality provide adequate information about application
 - Considerations
 - Format
 - Resolution
 - Readability
 - Suitability
 - Confidentiality

Developed as part of NSF ATE Grant #1304474 - Dec 2014

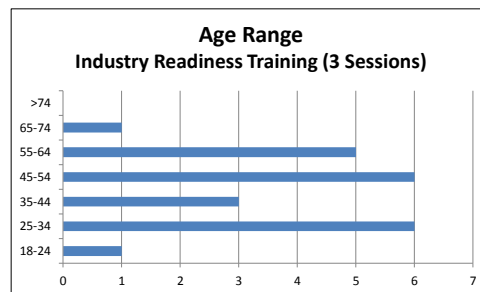
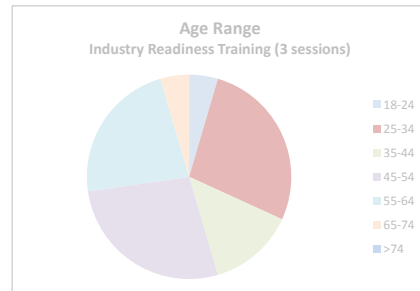
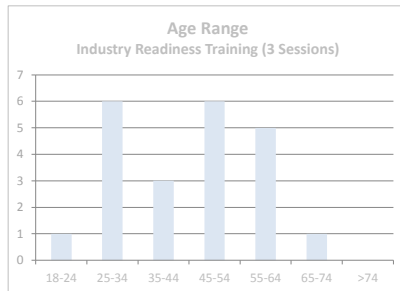
67

MEASUREMENT FUNDAMENTALS

- Data
 - Measurement results (data) used to make decisions
 - Type and quality provide adequate information about application
 - Considerations
 - **Format: presentation (layout)**
 - Graphically, table, number convention, font, etc.
 - Resolution
 - Readability
 - Suitability
 - Confidentiality

Developed as part of NSF ATE Grant #1304474 - Dec 2014

68



Developed as part of NSF ATE Grant #1304474 - Dec 2014

69

MEASUREMENT FUNDAMENTALS

- Data
 - Measurement results (data) used to make decisions
 - Type and quality provide adequate information about application
 - Considerations
 - Format: presentation (layout)
 - Resolution: least significant digit distinguishable
0.001 vs 0.0001 vs 0.00001
 - Readability
 - Suitability
 - Confidentiality

Developed as part of NSF ATE Grant #1304474 - Dec 2014

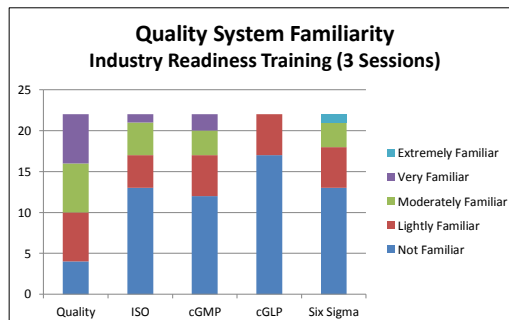
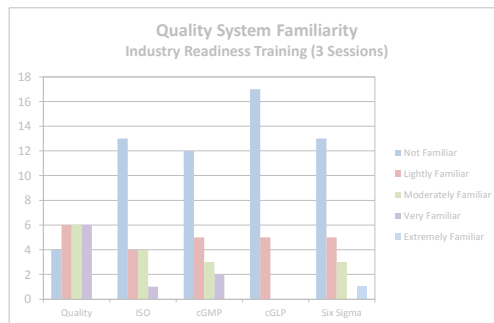
70

MEASUREMENT FUNDAMENTALS

- Data
 - Measurement results (data) used to make decisions
 - Type and quality provide adequate information about application
- Considerations
 - Format: presentation (layout)
 - Resolution: least significant digit distinguishable
 - Readability: presentation, ease of observer interpretation
 - Digital vs manual readout
 - Graphs vs tables
 - Suitability
 - Confidentiality

Developed as part of NSF ATE Grant #1304474 - Dec 2014

71



Developed as part of NSF ATE Grant #1304474 - Dec 2014

72

MEASUREMENT FUNDAMENTALS

- Data
 - Measurement results (data) used to make decisions
 - Type and quality provide adequate information about application
- Considerations
 - Format: presentation (layout)
 - Resolution: least significant digit distinguishable
 - Readability: presentation, ease of observer interpretation
 - Suitability: consider application derived from and intent of how it will be used
 - seldom occurring small changes over time
- Confidentiality

Developed as part of NSF ATE Grant #1304474 - Dec 2014

73

MEASUREMENT FUNDAMENTALS

- Data
 - Measurement results (data) used to make decisions
 - Type and quality provide adequate information about application
- Considerations
 - Format: presentation (layout)
 - Resolution: least significant digit distinguishable
 - Readability: presentation, ease of observer interpretation
 - Suitability: consider application derived from and intent of how it will be used
 - Confidentiality: protection of results and the source (unauthorized disclosure)

Developed as part of NSF ATE Grant #1304474 - Dec 2014

74

MEASUREMENT FUNDAMENTALS

- Methods
- System
- Capability
- Equipment specifications
- Environmental Controls
- Standards Usage
- Confidence (Uncertainty) Programs
- Data

Consideration of systems essential to ensure that measurements provide data needed to make informed, appropriate decisions

Developed as part of NSF ATE Grant #1304474 - Dec 2014

75

Review

Quality is a product (or service) with the features and characteristics which determine desirability and can be controlled to meet certain basic requirements.

- Measurement is a method for **evaluating** a property or **characteristic** of an object and **describing it with a numerical or nominal value**.
- Metrology is the science of measurement.
- Applied/Industrial metrology pertains to manufacturing and other processes
 - Ensuring the **suitability** of measurement instruments, their calibration and quality control of measurements.

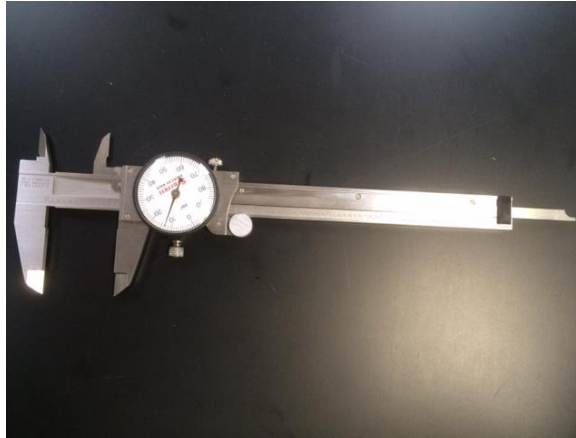
Suitability = Measurement Fundamentals (Metrology program)

Developed as part of NSF ATE Grant #1304474 - Dec 2014

76

Measuring Instruments

Dial Calipers



Developed as part of NSF ATE Grant
#1304474 - Dec 2014

77

Measuring Instruments

Digital Calipers



Developed as part of NSF ATE Grant
#1304474 - Dec 2014

78

Measuring Instruments

Digital Calipers



Developed as part of NSF ATE Grant
#1304474 - Dec 2014

79

Measuring Instruments

Micrometers



Developed as part of NSF ATE Grant
#1304474 - Dec 2014

80

Measuring Instruments

Digital Micrometers



Developed as part of NSF ATE Grant
#1304474 - Dec 2014

81

Measuring Instruments

Digital Micrometers



Developed as part of NSF ATE Grant
#1304474 - Dec 2014

82

Measuring Instruments

Precision Pin Gages



Developed as part of NSF ATE Grant
#1304474 - Dec 2014

83

Measuring Instruments

Precision Pin Gages



Developed as part of NSF ATE Grant
#1304474 - Dec 2014

84

Measuring Instruments Thread Gage



Developed as part of NSF ATE Grant
#1304474 - Dec 2014

85

Measuring Instruments Thread Gage

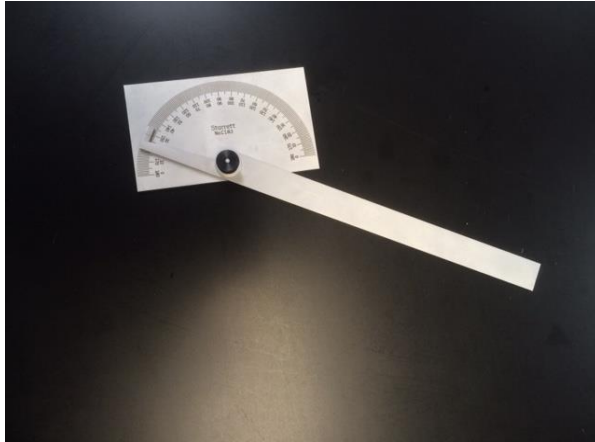


Developed as part of NSF ATE Grant
#1304474 - Dec 2014

86

Measuring Instruments

Protractor

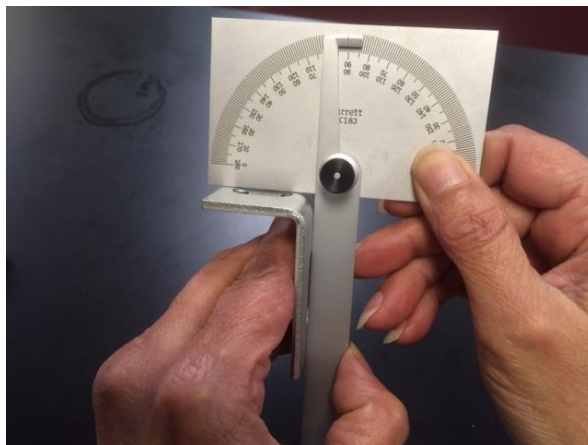


Developed as part of NSF ATE Grant
#1304474 - Dec 2014

87

Measuring Instruments

Protractor

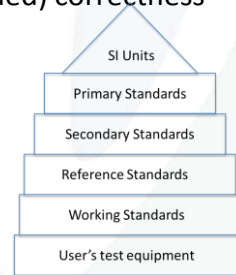


Developed as part of NSF ATE Grant
#1304474 - Dec 2014

88

CALIBRATION

- Comparison between measurements:
 - one of known magnitude or correctness
 - another measurement made in as similar a way as possible with a second device.
- Standard = device with known (or assigned) correctness
 - Standard types
 - International
 - National
 - Reference
 - Working
 - secondary
- Unit under test = second device



Developed as part of NSF ATE Grant #1304474 - Dec 2014

89

METROLOGY PROGRAM

- **Calibration System**
 - Adequacy of equipment & standards
 - Procedures (Methods)
 - Internal Process / External Vendor program
 - Intervals
 - Quality (Confidence)
 - Scheduling
 - Environmental Controls
 - Software Validation
 - Labels
 - Measurement Traceability

Developed as part of NSF ATE Grant #1304474 - Dec 2014

90

METROLOGY PROGRAM

- **Calibration System**
 - Internal Process / External Vendor program
 - Procedures (Methods)
 - Adequacy of equipment & standards
 - Measurement Traceability
 - Quality (Confidence)
 - Environmental Controls
 - Software Validation
 - Intervals
 - Scheduling
 - Labels
- **Measurement Fundamentals**
 - Methods
 - System
 - Capability
 - Equipment specifications
 - Environmental Controls
 - Standards Usage
 - Confidence (Uncertainty) Programs
 - Data

Developed as part of NSF ATE Grant #1304474 - Dec 2014

91

CALIBRATION SYSTEM

- **Adequacy of equipment & standards**
 - Consider accuracy, stability and range
 - Rule of thumb 10:1 ideal (4:1 acceptable, 1:1 if necessary)

Standard vs Device Under Test

Developed as part of NSF ATE Grant #1304474 - Dec 2014

92

CALIBRATION SYSTEM

- Procedures (Methods)
 - Standard operating procedures and/or work instructions
 - Operation of equipment
 - Performance of calibration
- Out-of-Tolerance occurrence (non-conformance)
 - Directly or indirectly affect process/product/safety
 - Documented investigation required
 - Unique equipment ID number
 - Calibration timing (date, previous, interval)
 - Calibration range / limits
 - Test points and measurement error
 - AS FOUND and AS LEFT
 - Adjustments/repairs
 - Evidence of mishandling, overload, lack of maintenance/cleaning, etc.
 - Interval adjustment (?)
 - Standard(s) used and their calibration date

Developed as part of NSF ATE Grant #1304474 - Dec 2014

93

CALIBRATION SYSTEM

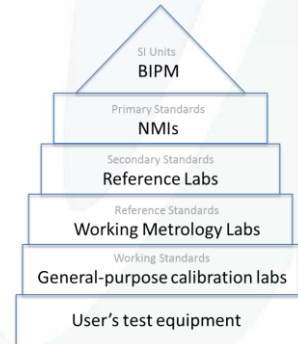
- Adequacy of equipment & standards
- Procedures (Methods)
 - Standard operating procedures and/or work instructions
- Out-of-Tolerance occurrence (non-conformance)
 - Directly or indirectly affect process/product/safety
 - Documented investigation required
 - Risk assessment for product

Developed as part of NSF ATE Grant #1304474 - Dec 2014

94

CALIBRATION SYSTEM

- Adequacy of equipment & standards
- Procedures (Methods)
- **Internal Process / External Vendor program**
 - Typically working standards used for product / process
 - Reference standards may be available within Calibration department for use on working standards
 - Reference standards then sent out or serviced in place for their calibration



Developed as part of NSF ATE Grant #1304474 - Dec 2014

95

CALIBRATION SYSTEM

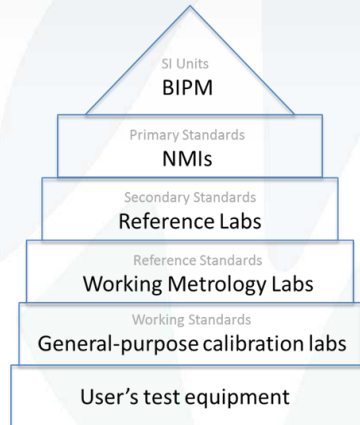
- Adequacy of equipment & standards
- Procedures (Methods)
- **Internal Process / External Vendor program**
 - Considered supplier of critical service
 - Accreditation and/or compliance
 - ISO 17025:2005
 - AL2A
 - Qualified per SOP and listed on approved vendor list
 - Send device or service on-site
 - Provides report
 - Methodology used with reference (i.e. ASTM, ANSI, etc)
 - Results: Certificate of Calibration
 - As Found/As Left, Range tested, results of testing (individual data points)
 - Uncertainty, measurement conditions, standard used & traceability
 - Signed & dated

Developed as part of NSF ATE Grant #1304474 - Dec 2014

96

CALIBRATION SYSTEM

- **Measurement Traceability**



Developed as part of NSF ATE Grant #1304474 - Dec 2014

97

CALIBRATION SYSTEM

- **Quality (Confidence)**
 - Reliability level, demonstrating within tolerance over a period of time and within an acceptable level for the device under test
 - Pass/fail
 - Adjustments/cleaning required
 - Repairs needed
- **Environmental Controls**
 - Calibration laboratory
 - Device under test
 - Bring to laboratory
 - Bring standards to device
 - Considerations
 - temperature, humidity, barometric pressure
 - vibration, electromagnetic interference, voltage regulation

Developed as part of NSF ATE Grant #1304474 - Dec 2014

98

CALIBRATION SYSTEM

- Software Validation
 - Opportunities
 - Calibration management
 - Device control software or data collection
 - Test procedure software
 - Statistical software
 - Standard References
 - 21 CFR Part 11, Electronic Records; Electronic Signatures
 - 211.68 Automated, mechanical and electrical equipment
 - 820.72 Inspection, measurement and test equipment
 - ISO 9001:2015 (7.1.5 Monitoring and Measurement Resources)
 - ISO 13485:2016 (7.6 Control of Monitoring & Measuring Equipment)

Developed as part of NSF ATE Grant #1304474 - Dec 2014

99

CALIBRATION SYSTEM

- Software Validation
 - Opportunities
 - Standard References
 - GAMP 5: A Risk-Based Approach to Compliant GxP Computerized Systems (2012)
 - Documented requirements
 - Intended use of system
 - Operational/functional requirements from user point of view
 - Risk assessment, including criticality, of software
 - Safety requirements (i.e. software control high voltage)

Developed as part of NSF ATE Grant #1304474 - Dec 2014

100

CALIBRATION SYSTEM

- Intervals (Frequency)
 - Designed to maintain uncertainty within acceptable limits
 - Days, Monthly, quarterly, semi-annual, annual, bi-annual
 - Verification at time-of-use
 - pH meters
 - Scales
 - Use and history assist in determination
- Scheduling
 - Identification of due dates before expiration
 - Notification of individuals
 - Identification of equipment status
 - In-use, retired, lost, at-time-of-use (seldom)
 - Use of validated software
- Labels

Developed as part of NSF ATE Grant #1304474 - Dec 2014

101

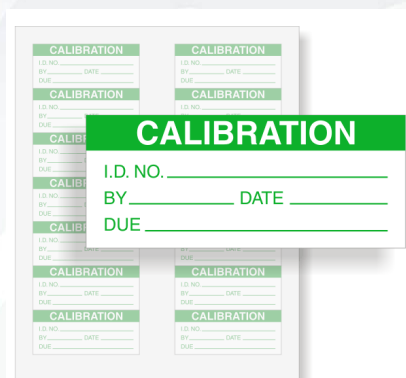
CALIBRATION SYSTEM

- Adequacy of equipment & standards
- Procedures (Methods)
- Internal Process / External Vendor program
- Measurement Traceability
- Quality (Confidence)
- Environmental Controls
- Software Validation
- Intervals
- Scheduling

Developed as part of NSF ATE Grant #1304474 - Dec 2014

102

CALIBRATION SYSTEM - Labels



CALIBRATION

I.D. NO. _____

BY _____ DATE _____

DUE _____

Developed as part of NSF ATE Grant #1304474.

103

CALIBRATION SYSTEM - Labels



LIMITED CALIBRATION

TESTED RANGE _____ TO _____

I.D.# _____ DATE _____

BY _____ DUE _____

Developed as part of NSF ATE Grant #1304474.

104

CALIBRATION SYSTEM - Labels



Developed as part of NSF ATE Grant #1304474.

105

CALIBRATION SYSTEM - Labels



Developed as part of NSF ATE Grant #1304474.

106

CALIBRATION SYSTEM - Labels



Developed as part of NSF ATE Grant #1304474.

107

INSPECTION

Inspection Methods
Sampling

Developed as part of NSF ATE Grant #1304474 - Dec 2014

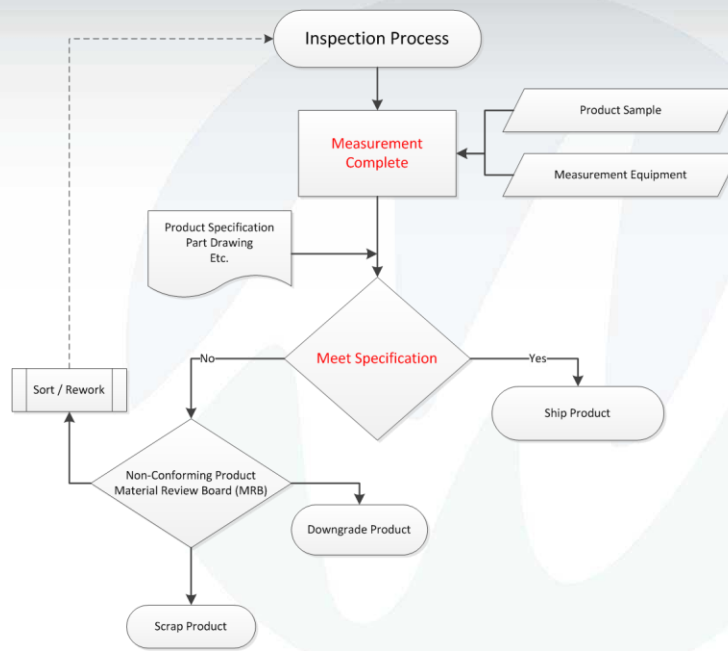
108

INSPECTION

- Customers want expectations and needs met consistently
 - Fitness for use
 - Form is free of defect
 - Functions as intended
- Evaluate product quality by comparing measurement results with specifications
- Inspection process:
 - Measurement of sample
 - Comparison against specification
 - Decision based on results
 - Corrective action, if necessary

Developed as part of NSF ATE Grant #1304474 - Dec 2014

109

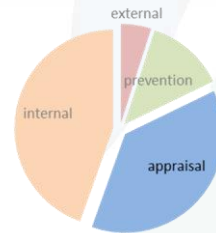


Developed as part of NSF ATE Grant #1304474 - Dec 2014

110

INSPECTION

- Customers want expectations and needs met consistently
 - Fitness for use
 - Form is free of defect
 - Functions as intended
- Evaluate product quality by comparing measurement results with specifications
- Inspection process:
 - Measurement of sample
 - Comparison against specification
 - Decision based on results
 - Corrective action, if necessary



**Inspection is after the fact –
materials used, product built, labor spent**

Developed as part of NSF ATE Grant #1304474 - Dec 2014

111

**Inspection is after the fact –
materials used, product built, labor spent**

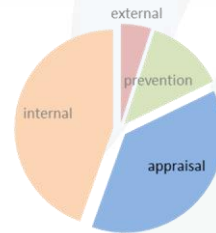
- Lean Six Sigma
 - Lean Manufacturing
 - Reduces (eliminates) waste
 - Focused on creating the most value with the least amount of work
 - DOWNTIME
 - defects
 - waiting for inspection
 - transportation to QC
 - excess processing (rework)
 - Six Sigma
 - Identifying (removing) defects
 - Minimizing process variability

Developed as part of NSF ATE Grant #1304474

112

INSPECTION

- Customers want expectations and needs met consistently
 - Fitness for use
 - Form is free of defect
 - Functions as intended
- Evaluate product quality by comparing measurement results with specifications
- Inspection process:
 - Measurement of sample
 - Comparison against specification
 - Decision based on results
 - Corrective action, if necessary



Quality is a value that **must be built into the product.**
Quality **cannot be inspected into the product**

Developed as part of NSF ATE Grant #1304474 - Dec 2014

113

INSPECTION

- Customers want expectations and needs met consistently
 - Fitness for use
 - Form is free of defect
 - Functions as intended
- Evaluate product quality by comparing measurement results with specifications
- Inspection process:
 - **Measurement of sample**
 - Comparison against specification
 - Decision based on results
 - Corrective action, if necessary

Developed as part of NSF ATE Grant #1304474 - Dec 2014

114

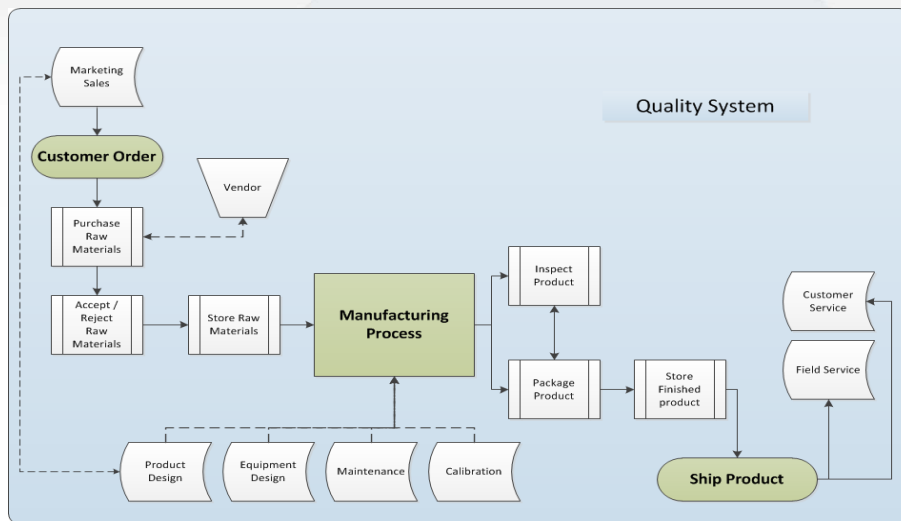
INSPECTION TYPES

- Acceptance Sampling
 - Incoming
 - During Manufacturing
 - Prior to Release
- Detail Inspection
 - Sorting good from bad
- Repeatability / Reproducibility
 - Equipment Checks
 - Measurement System Studies
- Pre-Control or Control Sampling
 - Evaluate process changes

Developed as part of NSF ATE Grant #1304474 - Dec 2014

115

PROCESS FLOW - MANUFACTURING



Developed as part of NSF ATE Grant #1304474 - Dec 2014

116

INSPECTION

- Inspection Points

Developed as part of NSF ATE Grant #1304474 - Dec 2014

117

SEVEN QUALITY TOOLS

1. Flow Chart / Run Chart
2. Check Sheet
3. Control Charts
4. Cause and Effect Diagram (a.k.a. Ishikawa or Fishbone)
5. Histogram
6. Pareto Chart
7. Scatter Plot (Diagram)

Developed as part of NSF ATE Grant #1304474 - Dec 2014

118

SEVEN QUALITY TOOLS – Flow Chart

- Picture of various steps/tasks in a process
 - how the operation tasks are connected
 - the order in which they need to be completed.
- Variety of flow chart types, with specific symbols,
 - basic flowchart shapes (US units)

Developed as part of NSF ATE Grant #1304474 - Dec 2014

119

SEVEN QUALITY TOOLS – Flow Chart

- Solid lines and arrows are used to connect the symbols and direct the user. Dotted lines may also sometimes be used. The difference between solid and dotted lines would be indicated on the flowchart.
- Start/End: indicates the starting point and ending point of the task/operation/process being depicted.
- Process: indicates an action step in the operation being depicted.
- Document: indicates a document will be needed or a document will be created
- Decision: typically contains a question and directs the user based on the response
- Data: used to indicate what results are expected or what information may be needed.
- Subprocess: used when one of the action steps is the result of another process that is not included on the current flowchart.

Developed as part of NSF ATE Grant #1304474 - Dec 2014

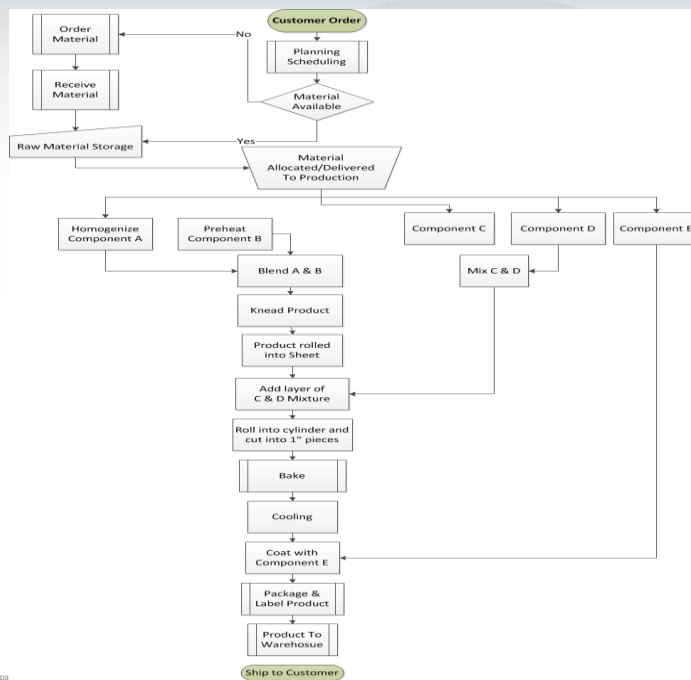
120

INSPECTION

- Inspection Points
 - Flow Chart / Run Chart
 - Identifies critical manufacturing/process steps
 - Sample entry points

Developed as part of NSF ATE Grant #1304474 - Dec 2014

121



Developed as pa

122

INSPECTION

- Flow Chart / Run Chart
 - Identifies critical manufacturing/process steps
 - Sample entry points
- Inspection Points – **Raw Materials**
 - Source (at the vendor)
 - Qualification / First Article
 - Final Release (CoA, CoC)
 - Dock-to-stock Qualified
 - Receiving

Developed as part of NSF ATE Grant #1304474 - Dec 2014

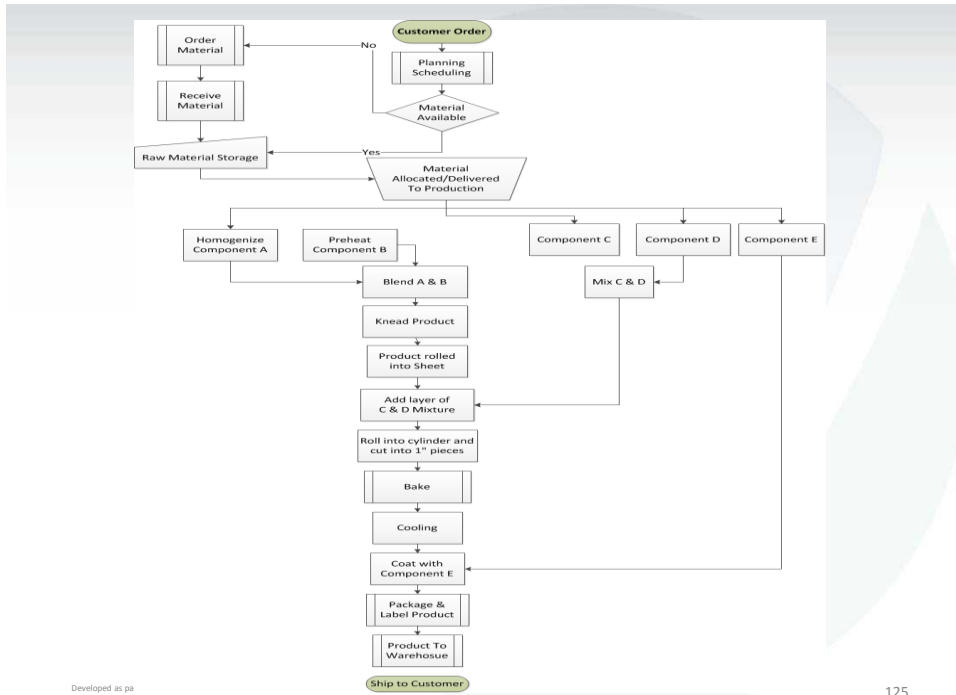
123

INSPECTION

- Inspection Points - **Product**
 - Source (at vendor)
 - Receiving (upon entry to facility)
 - Set-up (prior to first product)
 - In-process (during production, on-line)
 - Audit
 - During manufacture, random selection
 - Warehouse (packaging)
 - Final
 - Prior to release
 - Next phase
 - Inventory
 - Shipment / Customer

Developed as part of NSF ATE Grant #1304474 - Dec 2014

124



125

INSPECTION

- Inspection Points
- Inspection Procedure (Method)
 - Specify tools needed
 - Safety Precautions
 - Instructions for tool use and how to take measurement

Developed as part of NSF ATE Grant #1304474 - Dec 2014

126

INSPECTION

- Inspection Points
- Inspection Procedure (Method)
 - Specify tools needed
 - Safety Precautions
 - Instructions for tool use and how to take measurement
 - Sample requirements
 - Applicable standard (specification)
 - Records required

Developed as part of NSF ATE Grant #1304474 - Dec 2014

127

INSPECTION

- Inspection Points
- Inspection Procedure (Method)
 - Specify tools needed
 - Safety Precautions
 - Instructions for tool use and how to take measurement
 - Sample requirements
 - Applicable standard (specification)
 - Records required
 - What's done with acceptable or non-acceptable parts

Developed as part of NSF ATE Grant #1304474 - Dec 2014

128

INSPECTION

- Inspection Points
- Inspection Procedure (Method)
 - Specify tools needed
 - Safety Precautions
 - Instructions for tool use and how to take measurement
 - Sample requirements
 - Applicable standard (specification)
 - Records required
 - What's done with acceptable or non-acceptable parts
- Quality Records
 - Data collection sheets
 - Check Sheets
 - Automated Output

Developed as part of NSF ATE Grant #1304474 - Dec 2014

129

SEVEN QUALITY TOOLS

1. Flow Chart / Run Chart
2. **Check Sheet**
3. Control Charts
4. Cause and Effect Diagram (a.k.a. Ishikawa or Fishbone)
5. Histogram
6. Pareto Chart
7. Scatter Plot (Diagram)

Developed as part of NSF ATE Grant #1304474 - Dec 2014

130

INSPECTION – Check Sheet

Company Name

Document Number:
Revision Number:
Effective Date:
Page: 1 of 1

Standard Operating Procedure for Quality Testing 0.9% Sodium Chloride Using Conductivity – Data Record

Approvals:
Document Preparer: Rhonda Roll
Document Reviewer:
Date: October 22, 2014
Date:

Sample Identification

Batch #
Lot #
Prepared by / date

Conductivity Meter Identification Number:

Calibration Solution	Manufacturer

Calibration was successful as per SOP #2

(operator/date)

(witness/date)

ml sample of the batch listed above was obtained from production:

(production technician/date)

(received by/date)

(witness/date)

Conductivity measurement:
Target value = 15.97 (range: 15.31 – 16.63)

(operator/date)

(witness/date)

Comments:

Testing completed by:

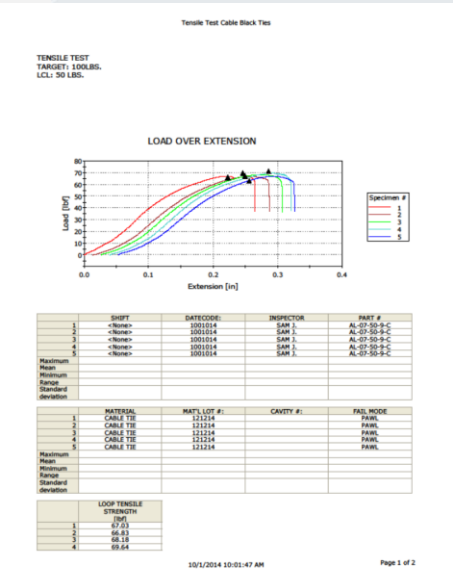
(Quality Assurance/date)

Developed as part of NSF ATE Grant #1304474 - Dec 2014

131

INSPECTION

- Automated output



Developed as part of NSF ATE Grant #1304474 - Dec 2014

132

INSPECTION TECHNIQUES

- Inspection can be conducted
 - Visually
 - Using hand tools (e.g. calipers)
 - Using automated equipment (e.g. vision systems)
 - Quantitative or qualitative
 - Destructive or non-destructive
 - 100% or sampled

Developed as part of NSF ATE Grant #1304474 - Dec 2014

133

INSPECTION TECHNIQUES

- Inspection can be
 - Quantitative (aka Variable) or Qualitative
 - Numerical
 - Can be measured
 - Continuous value or discrete values
 - Quantitative or Qualitative (aka Attribute)
 - Descriptive; can be observed but not measured
 - Typically pass/fail

Developed as part of NSF ATE Grant #1304474 - Dec 2014

134

INSPECTION TECHNIQUES



- Qualitative
 - Robust aroma
 - Frothy appearance
 - Strong taste
 - Burgundy cup
- Quantitative
 - 12 ounce cappuccino
 - Serving temperature 150 °F
 - 7-inch mug
 - Cost \$4.95

Developed as part of NSF ATE Grant #1304474 - Dec 2014

135

INSPECTION TECHNIQUES

- Inspection can be
 - Quantitative or qualitative
 - **Destructive** or non-destructive
 - Sample removed from lot/batch and cannot be returned
 - Sample altered during testing/measurement

Examples?

Developed as part of NSF ATE Grant #1304474 - Dec 2014

136

INSPECTION TECHNIQUES

- Inspection can be
 - Quantitative or qualitative
 - Destructive or **Non-Destructive**
 - Sampled in-line (in-process) and remains with the product
 - Sample not altered during testing/measurement

Examples?

Developed as part of NSF ATE Grant #1304474 - Dec 2014

137

INSPECTION TECHNIQUES

- Inspection can be
 - Quantitative or qualitative
 - Destructive or non-destructive
 - **Conducted 100%** or via sampling
 - Is not 100% accurate / effective
 - Rule of thumb = 80% effective
 - Not always possible / feasible
 - Destructive versus non-destructive
 - Continuous process
 - Can be conducted on-line (in-process)

Visual inspection – effectiveness example

Developed as part of NSF ATE Grant #1304474 - Dec 2014

138

Count the number of f's

The responsibility, authority, and the interrelation of personnel who manage, perform, and verify work affecting quality shall be defined and documented, particularly for personnel who need the organizational freedom and authority to:

- a) initiate action to prevent the occurrence of any nonconformities relating to product, process, and quality system;
- d) verify the implementation of solutions;
- e) control further processing, delivery, or installation of nonconforming product until the deficiency or unsatisfactory condition has been corrected.

Developed as part of NSF ATE Grant #1304474.

139

Count the number of F F's

The responsibility, authority, and the interrelation of F personnel who manage, perForm, and veriFy work aFFecting quality shall be deFined and documented, particularly Ffor personnel who need the organizational Ffreedom and authority to:

- a) initiate action to prevent the occurrence of F any nonconFormities relating to product, process, and quality system;
- d) veriFy the implementation oF solutions;
- e) control Further processing, delivery, or installation of F nonconFforming product until the deFiciency or unsatisFactory condition has been corrected.

19

Developed as part of NSF ATE Grant #1304474.

140

INSPECTION TECHNIQUES

- Inspection can be
 - Quantitative or qualitative
 - Destructive or non-destructive
 - Conducted 100% or via **Sampling**

Developed as part of NSF ATE Grant #1304474 - Dec 2014

141

SAMPLING

- What is the sample?
 - selection of a **subset** of individuals from within a statistical population to **estimate** characteristics of **the whole** population

Developed as part of NSF ATE Grant #1304474 - Dec 2014

142

SAMPLING

- In Manufacturing, a portion of
 - Product lot / batch
 - Daily production
 - Shipment
 - Etc.
- In Service
 - Transactions handled
 - Survey results
 - Etc.
- Audits – documentation
 - Specific department
 - Time period
 - Etc.

Developed as part of NSF ATE Grant #1304474 - Dec 2014

143

SAMPLING

- Advantages (vs 100%)
 - Economy
 - Less opportunity for product damage
 - Lot-by-lot examination
 - Applicable for destructive testing
 - Lot rejection versus piece rejection
- Disadvantages (vs 100%)
 - Risk of reject good / bad lot
 - Greater administration costs
 - Additional planning/documentation
 - Less actual info about the product
 - Will not find ALL defective
 - Maintains quality level, doesn't drive improvement

Developed as part of NSF ATE Grant #1304474 - Dec 2014

144

SAMPLING: PLANS

- Need planned strategy and logistics
- Reminder

- **Measurement Fundamentals**
 - Methods
 - System
 - Capability
 - Equipment specifications
 - Environmental Controls
 - Standards Usage
 - Confidence (Uncertainty) Programs
 - Data

Consideration of systems essential to ensure that measurements provide data needed to make informed, appropriate decisions

Ensuring SAMPLE represents ALL potential product/service is also critical.

Developed as part of NSF ATE Grant #1304474 - Dec 2014

145

SAMPLING: PLANS

- Need planned strategy and logistics
 - How (where)/when can samples be taken
 - Flow chart / Run Chart
 - Intermediate, finished product
 - Form of the sample (gas, liquid, solid, assembly, etc)
 - Recorded calls, database print-out
 - Etc.
 - Collection

Developed as part of NSF ATE Grant #1304474 - Dec 2014

146

SAMPLING: PLANS - COLLECTION

- When/where within the manufacturing process
 - Maintain traceability of the product
- Sampling Methods
 - Random
 - Every piece/part/sample has the opportunity to be chosen
 - Systemic (specified collection frequency)
 - Beginning, middle, end of production run
 - Each shift, hourly, every 100th piece
 - Stratified
 - Top, middle, bottom (i.e. soil sample)

Developed as part of NSF ATE Grant #1304474 - Dec 2014

147

SAMPLING: PLANS - COLLECTION

- When/where within the manufacturing process
 - Maintain traceability of the product
- Sampling Methods
 - Random
 - Systemic
 - Stratified

Assumes uniformity (homogeneity)

Beware of BIAS

One lot of material / operator / line / machine
A-shift vs B vs C
Summer vs Winter
Northeast vs Midwest vs South vs West

Developed as part of NSF ATE Grant #1304474 - Dec 2014

148

SAMPLING: PLANS - COLLECTION

- When/where within the manufacturing process
 - Maintain traceability of the product
- Sampling Methods
 - Random
 - Systemic
 - Stratified
 - ✓ Assumes uniformity (homogeneity)
 - ✓ Beware of BIAS
 - One lot of material / operator / line / machine
 - A-shift vs B vs C
 - Summer vs Winter
 - Northeast vs Midwest vs South vs West

**RANDOM sample required to
estimate population (lot)**

Developed as part of NSF ATE Grant #1304474 - Dec 2014

149

SAMPLING: PLANS

- Need planned strategy and logistics
 - How/when can samples be taken
 - Flow chart / Run Chart
 - Intermediate, finished product
 - Form of the sample (gas, liquid, solid, assembly, etc)
 - Recorded calls, database print-out
 - Etc.
 - Collection
 - Handling
 - Special equipment
 - Environment
 - Storage
 - Test immediately
 - Preparation

Developed as part of NSF ATE Grant #1304474 - Dec 2014

150

SAMPLING: PLANS

- What is the sample?
- Need planned strategy and logistics
 - How/when can they be taken
 - Who provides (selects) the sample
 - QC
 - Production
 - Customer
 - Vendor
 - Study Leader
 - Will samples be put back into batch
 - Example: Fishery catch/release
 - Quantity to measure / select

Developed as part of NSF ATE Grant #1304474 - Dec 2014

151

SAMPLING: QUANTITY

- Methods vary for measurement needs
 - Product(s) manufactured
 - Services provided
 - Clinical Trials for new drugs
 - US Citizens for voter preference

"sampling (statistical)" Wikipedia.com

Developed as part of NSF ATE Grant #1304474 - Dec 2014

152

SAMPLING: QUANTITY

- Two types of data
 - Variable (quantitative)
 - Attribute (qualitative)
- Generally accepted standards
 - Attribute (ANSI ASQ Z1.4-2008)
 - classifies products as conforming or non-conforming
 - accept or reject the lot
 - larger sample sizes
 - Variable (ANSI ASQ Z1.9-2008)
 - use actual measurements of the product to make decisions
 - estimates how close to nominal or specifications a process is running
 - smaller sample sizes

Developed as part of NSF ATE Grant #1304474 - Dec 2014

153

SAMPLING: QUANTITY

- Generally accepted standards
 - Attribute (ANSI ASQ Z1.4-2008)
 - Variable (ANSI ASQ Z1.9-2008)
- Attribute and Variable plans both rely on acceptable quality limits (AQL)
 - AQL estimates the percent defective in the group sampled
 - The plans are based on statistical estimates and assumptions with associated errors
 - Producers risk (Type I error) – reject a batch that is good
 - Consumer risk (Type II error) – accept a batch that is bad
- Statistics based on AQL = 0.10 or 99.9% good

Developed as part of NSF ATE Grant #1304474 - Dec 2014

154

IS 99.9% GOOD ENOUGH

A standard of 99.9% effectiveness sounds impressive, but consider that if 99.9% was good enough, then ...

Developed as part of NSF ATE Grant #1304474 - Dec 2014

155

IS 99.9% GOOD ENOUGH

A standard of 99.9% effectiveness sounds impressive, but consider that if 99.9% was good enough, then ...

- Every day
 - Hospitals would give twelve newborns to wrong parents
 - Two planes landing at Chicago O'Hare would be unsafe
- Each year
 - Footwear companies would ship 114,500 mismatched pairs of shoes
 - IRS would lose two million documents
 - 20,000 incorrect drug prescriptions

claims-portal.com

Developed as part of NSF ATE Grant #1304474 - Dec 2014

156

SAMPLING: QUANTITY

- Generally accepted standards
 - Attribute (ANSI ASQ Z1.4-2008)
 - Variable (ANSI ASQ Z1.9-2008)
- Attribute and Variable plans both rely on acceptable quality limits (AQL)
 - AQL estimates the percent defective in the group sampled
 - The plans are based on statistical estimates and assumptions with associated errors
 - Statistics based on AQL = 0.10 or 99.9% good
- C=0 by Nicholas L. Squeglia also has general industry acceptance.
- Additional plans:
 - Dodge-Romig Sampling Tables; MIL-STD-1916 or -1235

Developed as part of NSF ATE Grant #1304474 - Dec 2014

157

SAMPLING: QUANTITY

Z1.4 and Z1.9 examples

Developed as part of NSF ATE Grant #1304474 - Dec 2014

158

MEASUREMENT EXPLORATION

Sample plan examples

Bead Experiment – can I ship it?

Metal Parts – against drawings